



Portable Whirlwind Mixer

Application Details:

NBE CSO: E501850031

Material: Plastic Regrind and Plastic Pellets

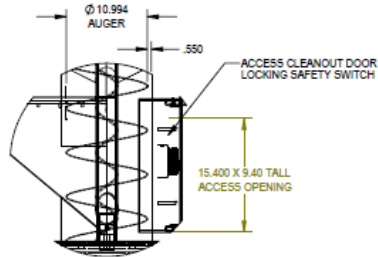
Bulk Density: 30 to 35 lbs/ft³

Flowability: Free Flowing

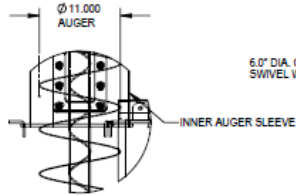
Area Classification: General Industrial

Clean Procedure: Dry Clean

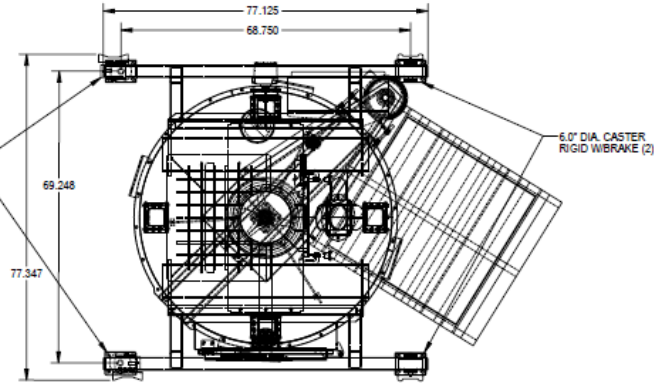
Application Overview: This 65.5 ft³ Whirlwind mixer is designed with casters and fork pockets to be portable. The customer has multiple processing locations that does not allow for permanent equipment. The portable design provides flexibility when loading, mixing and unloading at a specific processing station. The mixer has two discharge methods, a 3" vacuum probe connection and a 6" Gaylord drain tube with manual slide gate. The equipment does not need air and the customer provided the power cord for connection to the control panel.



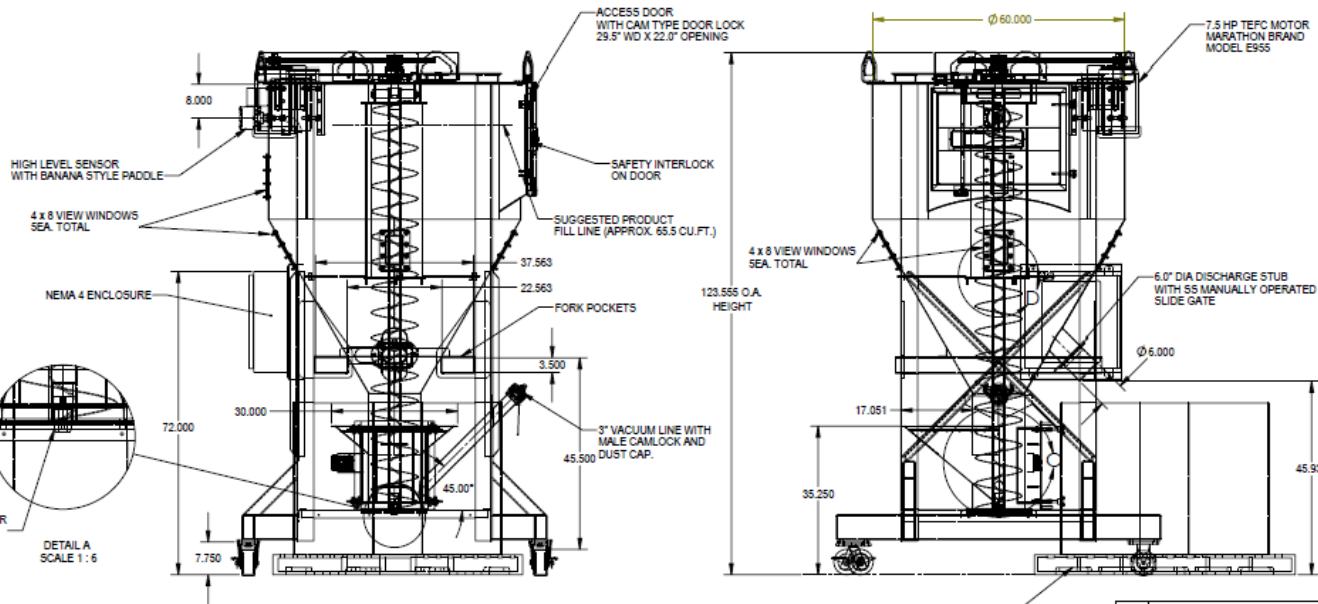
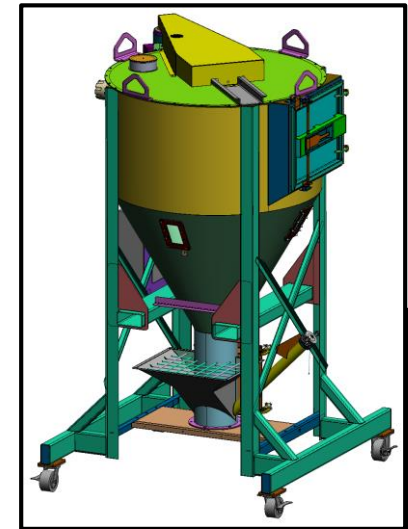
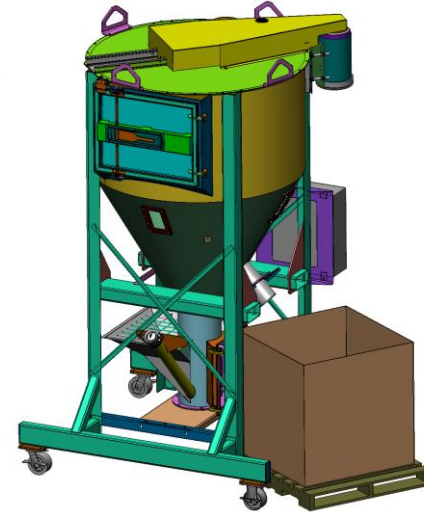
DETAIL C
SCALE 1:8



DETAIL D
SCALE 1:8



REVISIONS			
LET	REVISION NOTES	NAME	DATE
A	RELEASED FOR APPROVAL	KAR	3/5/2018
B	REMOVED PNEUMATICS	KAR	4/18/18
C	AS BUILT	KAR	6/22/18



NBE CSO# E501850031
JOB # J27558

Material = Plastic Regrind and pellets semi free flowing 30 to 35 PCF
40-3SP-WW Mixer

Material of Construction: carbon steel
Exterior Color: NBE Metallic

- 3" Vacuum line hook up probe with camlock and dust cap.
- Bottom support frame with 6" caster package.
- Fork truck channels mounted off mixer cone.
- Change standard view window to rectangular view window mounted on body wall.
- Large access door with locking handle assembly.
- Wash down safety interlock on door.
- NEMA 4 Enclosure. No timer package on controls. Only start-stop.
- Small bottom access door on back of in-feed hopper with locking switch.
- High level rotary sensor with reset button and indicator light in panel.
- view windows 4 x 8 (5 total).

APPROVED: PROCEED AS DRAWN	<small>THIS DOCUMENT CONTAINS PROPRIETARY INFORMATION AND IS THE PROPERTY OF NATIONAL BULK EQUIPMENT, INC. THIS INFORMATION IS NOT TO BE REPRODUCED OR TRANSMITTED IN ANY FORM OR BY ANY MEANS, ELECTRONIC OR MECHANICAL, INCLUDING PHOTOCOPYING, RECORDING, OR BY ANY INFORMATION STORAGE AND RETRIEVAL SYSTEM, WITHOUT THE WRITTEN PERMISSION OF NATIONAL BULK EQUIPMENT, INC.</small>	MODEL CREATOR (BWW 02/2017) DWG BY: KAR DATE: 02/27/18
APPROVED WITH REVISIONS NOTED		NATIONAL BULK EQUIPMENT ASSY SP-40-300 WW MIXER
NOT APPROVED: REVISE AND REDUBMIT		<small>13000 STANLESS DR., HOLLAND, MICHIGAN 48424 PHONE: (616) 369-2200 www.nbe-usa.com</small>

