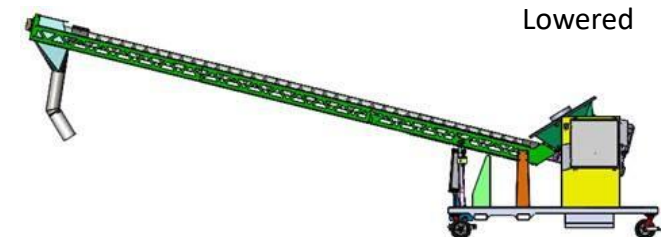
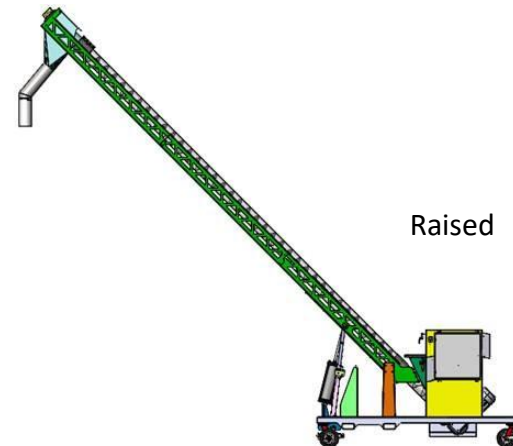


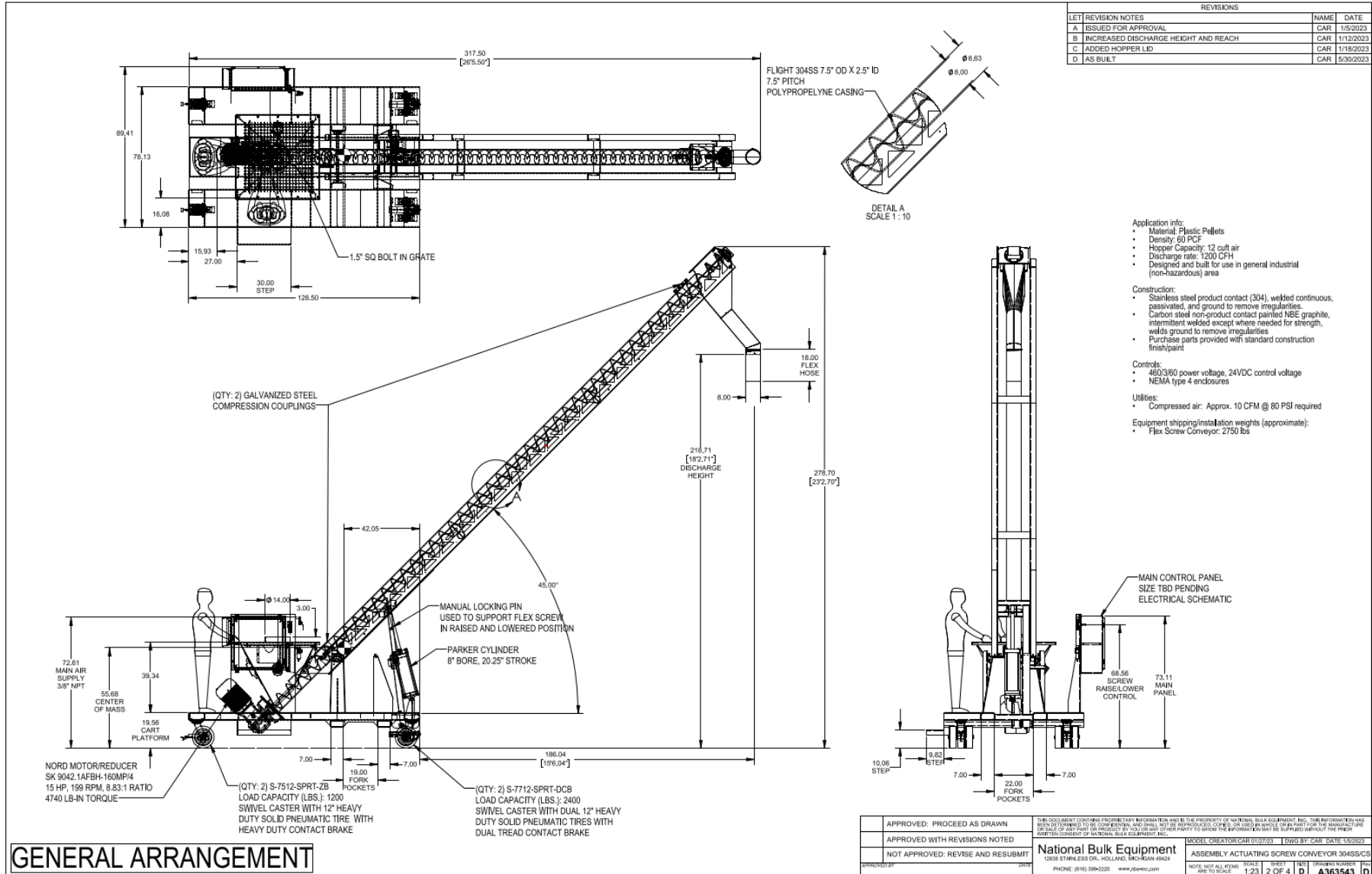
Portable Flex Screw Conveyor System

Application / Equipment Details:

- NBE CSO: E90229036
- Material: Plastic Pellets
- Bulk Density: 60 lbs/cubic foot
- Particle Size: 1/8"
- Required Rate: 1,200 cubic feet/hour

Application Overview: This customer required a solution to quickly transfer a high volume of plastic pellets from supersacks to rail cars. The system needed to be portable to fill the various inlets of the rail car and needed to be easily moved across rough, varying terrain. The system also needed to be adjustable to reach the height of the railcar but lowered in order to be brought indoors for storage when not in use. The system included an integral operator platform/base that also serves as a counter weight to the discharge head of the conveyor. This base incorporated fork pockets and large 12" pneumatic rubber swivel casters for easy movement. An 8" air cylinder controls the adjustment of the position of the discharge head. An integral operator panel with VFD controls the operation of the screw conveyor.





| REVISIONS | | | |
|-----------|--------------------------------------|------|-----------|
| LET | REVISION NOTES | NAME | DATE |
| A | ISSUED FOR APPROVAL | CAR | 1/5/2023 |
| B | INCREASED DISCHARGE HEIGHT AND REACH | CAR | 1/12/2023 |
| C | ADDED HOPPER LID | CAR | 1/18/2023 |
| D | AS BUILT | CAR | 5/30/2023 |

- Application Info:**
- Material: Plastic Pellets
 - Density: 60 PCF
 - Hopper Capacity: 12 cuft air
 - Discharge rate: 1200 CFH
 - Designed and built for use in general industrial (non-hazardous) area
- Construction:**
- Stainless steel product contact (304), welded continuous, passivated, and ground to remove irregularities.
 - Carbon steel non-product contact painted NBE graphite, intermittent welded except where needed for strength, welds ground to remove irregularities
 - Purchase parts provided with standard construction finish/paint
- Controls:**
- 460/360 power voltage, 24VDC control voltage
 - NEMA type 4 enclosures
- Utilities:**
- Compressed air: Approx. 10 CFM @ 80 PSI required
- Equipment shipping/installation weights (approximate):**
- Flex Screw Conveyor: 2750 lbs

GENERAL ARRANGEMENT

| | | |
|-----------------------------------|---|--|
| APPROVED: PROCEED AS DRAWN | <p>National Bulk Equipment 12838 STAINLESS DR., HOLLAND, MICHIGAN 49424 PHONE: (616) 399-0220 www.nbeinc.com</p> | ASSEMBLY ACTUATING SCREW CONVEYOR 304SS/CS |
| APPROVED WITH REVISIONS NOTED | | SCALE: 1:23 |
| NOT APPROVED: REVISE AND RESUBMIT | | SHEET: 2 OF 4 |
| DESIGNED BY: [REDACTED] | DATE: [REDACTED] | PROJECT NUMBER: [REDACTED] |

