



Low Profile Bulk Bag Discharger with Load Cells

Application Details:

NBE CSO: E102010117

Material: Whole Bean Roast Coffee

Bulk Density: 20 lbs/ft³

Particle Size: ~10mm long x 6mm wide

Flowability: Semi-Free Flowing

Area Classification: General Industrial

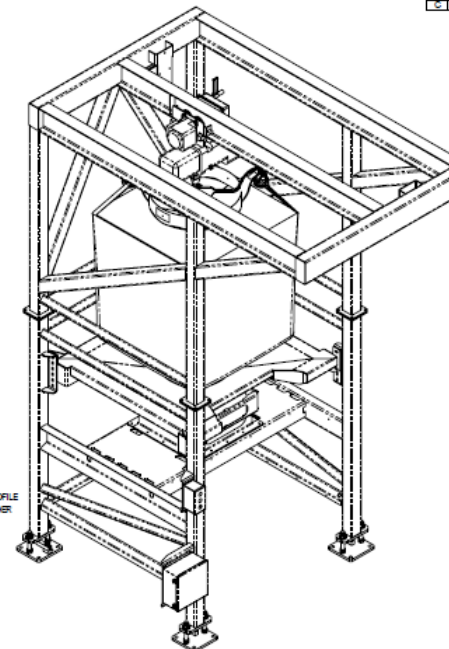
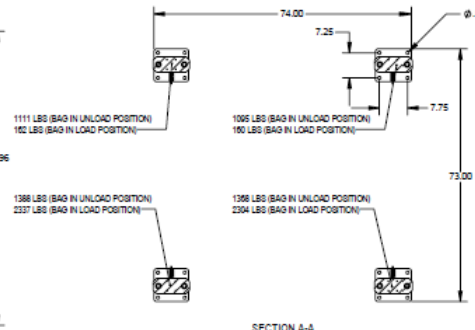
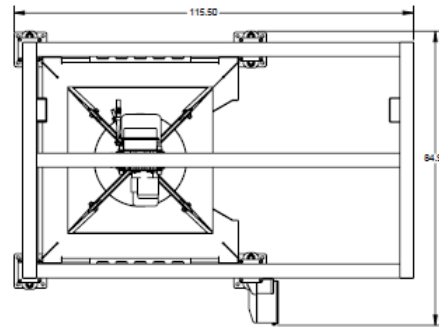
Discharge: Customer Supplied Mechanical Transfer

Clean Procedure: Dry Wipe

Application Overview:

Customer only had a 13.5' available height in their building to unload their bulk bags of whole coffee beans. They also had to transfer a specific batch weight of beans to their downstream mixer. We supplied a Low Profile Frame along with a Low Profile Bag Hanger with Chain Reservoir to fit within the available space. The Discharger included a Load Cell Package to integrate with the customer's mixer scale to provide the required batch weight to their mixer.

AS BUILT



REVISIONS		NAME	DATE
LET	REVISION NOTES	KJM	07/20/2020
A	ISSUED FOR APPROVAL	KJM	07/20/2020
B	SWITCHED TO LOW PROFILE HOIST FRAME, BAG HANGER, AND SHORTENED BASE FRAME WELDMENT	KJM	10/05/2020
C	CHANGED BAG HANGER DUE TO INTERNAL TESTING	KJM	10/19/2020

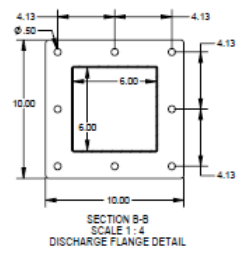
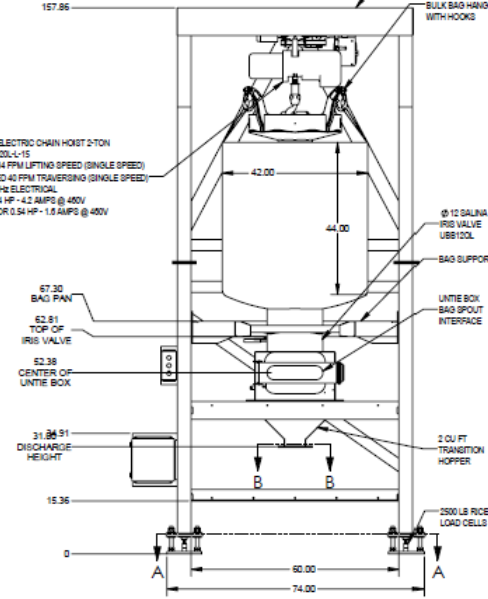
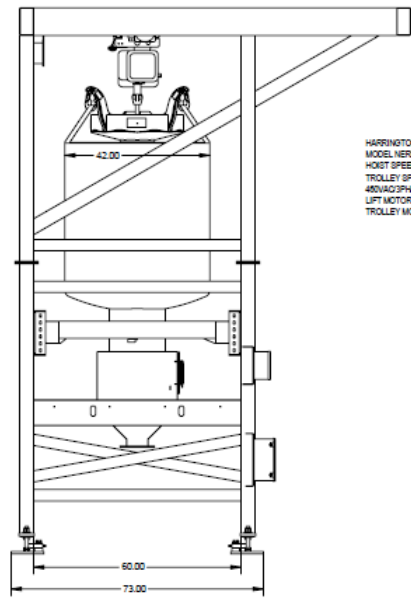
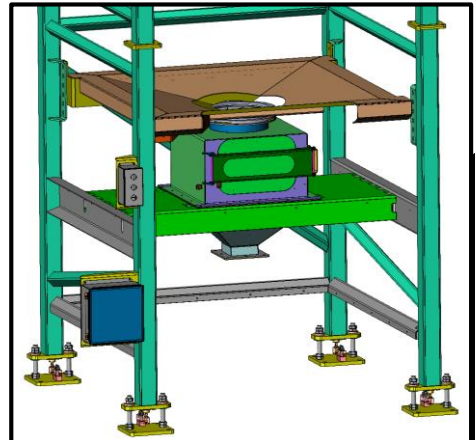
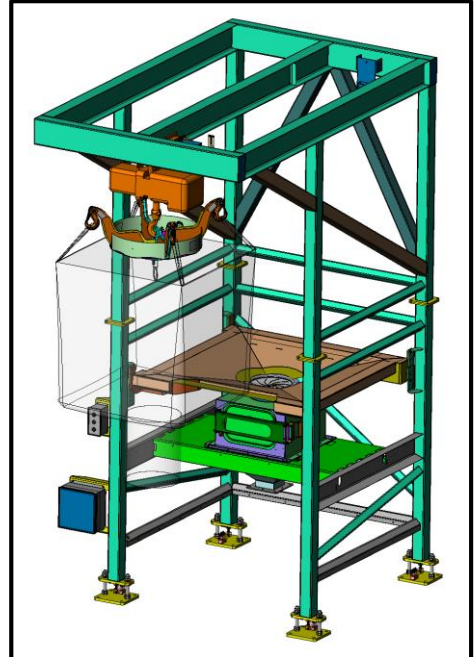
CUSTOMER PO #: 1007873
NBE CSO #: E102010117
NBE JOB #: J37863

- APPLICATION INFO:**
- MATERIAL: WHOLE BEAN ROAST COFFEE, FREE FLOWING, 20 PCF
 - BULK BAG: 42" X 42" X 44", LOOPS - 14", SPOUT - CUSTOMER TO SPECIFY

- CONSTRUCTION:**
- ALL *PRODUCT CONTACT* SURFACES ARE CONSTRUCTED FROM 304 STAINLESS STEEL
 - ALL STAINLESS STEEL MATERIAL 7GA AND THINNER WILL BE 2B FINISH
 - ALL STAINLESS STEEL MATERIAL THICKER THAN 7GA WILL BE MILL FINISH
 - ALL STAINLESS STEEL MATERIALS TUBING AND PIPE WILL BE MILL FINISH
 - ALL *PRODUCT CONTACT* WELDS ARE CONTINUOUS, GROUND SMOOTH NOT NECESSARILY FLUSH, AND PASSIVATED
 - ALL *NON-PRODUCT CONTACT* SURFACES ARE CONSTRUCTED FROM CARBON STEEL AND PAINTED NBE GRAPHITE
 - ALL *NON-PRODUCT CONTACT* WELDS ARE INTERMITTENT, CONTINUOUS WHERE REQUIRED FOR STRENGTH, AND GROUND TO REMOVE IRREGULARITIES
 - PURCHASED PARTS ARE PROVIDED WITH STANDARD CONSTRUCTION FINISH/PAINT.

- BULK BAG UNLOADER DETAILS:**
- RICE LAKE 2500LB LOAD CELLS
 - RICE LAKE SUMMING BOX
 - RICE LAKE SCT-10 DIGITAL WEIGH TRANSMITTER
 - 2-TON HOIST
 - ULTRA LOW PROFILE BAG HANGER WITH HOOKS
 - BAG SUPPORT PAN
 - 12" AL IRIS VALVE
 - 12" UNTIE BOX
 - 2 FT*3 DISCHARGE TRANSITION TO 6" SQ. SALINA SLIDE GATE AT 31" ABOVE GRADE

- CONTROLS:**
- POWER SUPPLY: 460V/3PH/60HZ
 - HOIST CONTROL VOLTAGE: 120V/1PH/60HZ
 - AREA CLASSIFICATION: GENERAL AREA NEMA 12
 - CUSTOMER RESPONSIBLE FOR WEIGH TRANSMITTER INTEGRATION INTO THEIR CONTROLS PACKAGE



HARRINGTON ELECTRIC CHAIN HOIST 2-TON
MODEL NEM1002L-U-15
HOIST SPEED 14 FPM LIFTING SPEED (SINGLE SPEED)
TROLLEY SPEED 40 FPM TRAVERSING (SINGLE SPEED)
480VAC 3PH/60HZ ELECTRICAL
LIFT MOTOR 2.4 HP - 1.2 AMP @ 480V
TROLLEY MOTOR 0.54 HP - 1.0 AMP @ 480V

APPROX MACHINE WEIGHT
EMPTY: 2,963 LBS
APPROX MACHINE WEIGHT
WITH 2000LB LOAD: 4,963 LBS

APPROVED: PROCEED AS DRAWN	THIS DOCUMENT CONTAINS PROPRIETARY INFORMATION AND IS THE PROPERTY OF NATIONAL BULK EQUIPMENT, INC. THIS INFORMATION IS NOT TO BE DISCLOSED TO ANY PARTY OR REPRODUCED BY ANY MEANS WITHOUT THE WRITTEN CONSENT OF NATIONAL BULK EQUIPMENT, INC.
APPROVED WITH REVISIONS NOTED	
NOT APPROVED: REVISE AND RESUBMIT	

National Bulk Equipment
2000 STANLEY DR., HOLLAND, MI 49424
PHONE: (616) 396-2320 www.nbe-inc.com

MODEL CREATOR: KJM (07/20/20) DWG BY: KJM DATE: 07/20/2020

BULK BAG UNLOADER

NOTE: SEE ALL DIMENSIONS FOR DETAILS
SCALE: 1:16 2 OF 3 D A296306 C

