

## Lift and Seal Drum Dumper with Integrated Flexible Screw Conveyor

### Application Details:

NBE CSO: E901890025

Material: H3 Aluminum & AP Powders

Bulk Density: 46.2 PCF, AP: 68.7 PCF

Particle Size: Powders

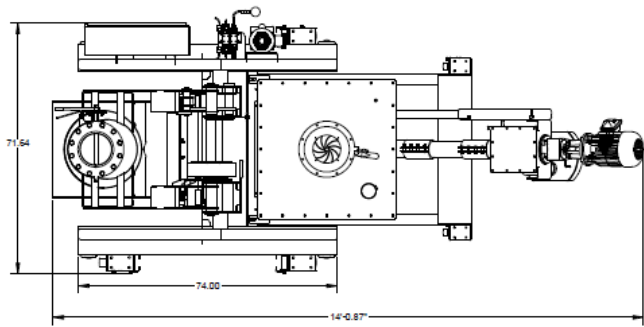
Flowability: Semi Free flowing

Area Classification: General Area

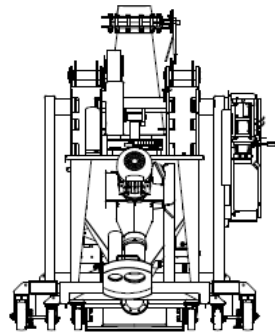
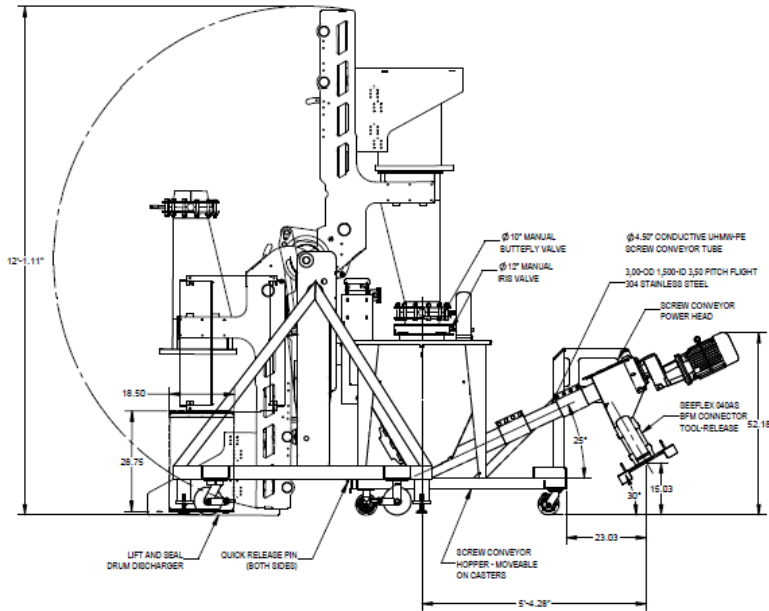
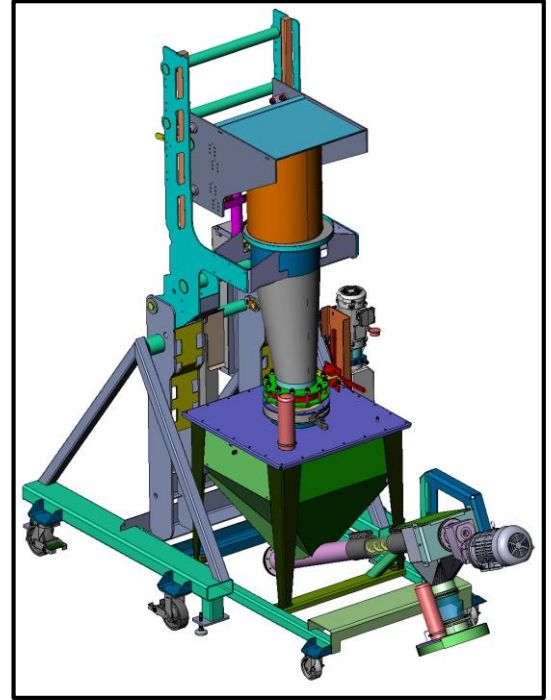
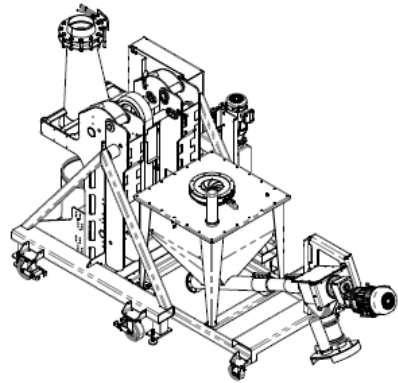
Clean Procedure: Washdown – low water pressure

### Application Overview:

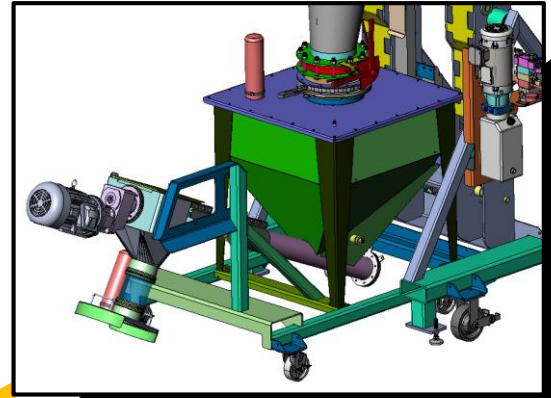
Customer required a drum discharger and portable screw conveyor to contain dust while discharging and conveying. The area was rated general area, but the material is considered an explosive, so the system utilized anti-static tubing for the conveyor and was bonded and grounded.



REVISIONS		
LET	REVISION NOTES	NAME DATE
A	ISSUED FOR APPROVAL	MTR 3/20/2019
B	UPDATED PER CUSTOMER MARK-UPS	MTR 4/11/2019
C	ANGLED BLENDER CONVEYOR DISCHARGE HEAD - AS APPROVED	MTR 4/18/2019
D	AS-BUILT	MTR 8/12/2019



NBE COO # 690190005  
 PO # MPO0003437  
 Material Name: HG Aluminum & AP Powders  
 Bulk Density AL: 48.2 PCF, AP: 88.7 PCF  
 Particle Size AL: Unknown, AP 20 um and 200 um  
 Flowability: pen-fee flowing  
 Drum: 30 gallon fiberboard drums  
 Drum Size: 16.5" Dia x 28.75" tall  
 Construction Requirements:  
 Product Contact Surfaces: 304 Stainless Steel  
 Product Weld Finish: Continuous / Peenized / Ground  
 Smooth and flush - 304SS  
 Non-Product Contact: 304 Stainless Steel  
 Non-Contact Weld Finish: Continuous welded - deburred  
 Purchased parts are provided with standard construction finish/paint.  
 Nylon nuts to be used on bolted connections  
 No fasteners in product stream  
 Electrical Supply: 480 VAC / 3 Ph / 60 Hz  
 Control Voltage: 24 VDC  
 Enclosures: NEMA 4X  
 Washdown Procedure: Washdown - low water pressure  
 Area Classification: General Area



APPROVED: PROCEED AS DRAWN	THIS DOCUMENT CONTAINS PROPRIETARY INFORMATION AND IS THE PROPERTY OF NATIONAL BULK EQUIPMENT INC. THIS INFORMATION HAS BEEN DEVELOPED BY THE COMPANY AND IS NOT TO BE REPRODUCED OR TRANSMITTED IN ANY FORM OR BY ANY MEANS, ELECTRONIC OR MECHANICAL, INCLUDING PHOTOCOPYING, RECORDING, OR BY ANY INFORMATION STORAGE AND RETRIEVAL SYSTEM, WITHOUT THE WRITTEN PERMISSION OF NATIONAL BULK EQUIPMENT INC.	MODEL CREATOR: MTR (650770) DWG BY: MTR DATE: 3/19/2019
APPROVED WITH REVISIONS NOTED		NATIONAL BULK EQUIPMENT
NOT APPROVED: REVISE AND RESUBMIT		ASSEMBLY DRUM DISCHARGER SYSTEM

National Bulk Equipment  
 13333 STAINLESS DR. HOLLAND, MICHIGAN 48424  
 PHONE: (616) 369-2220 www.nbe-inc.com

SCALE: 1:16  
 SHEET: 2 OF 10  
 A267226

