



Forklift Bulk Bag Discharge with Load Cell Package

Application Details:

NBE CSO: E102010210

Material: Potassium Nitrate (Salt)

Bulk Density: 85 lbs/ft³

Particle Size: Prills

Flowability: Tends to agglomerate

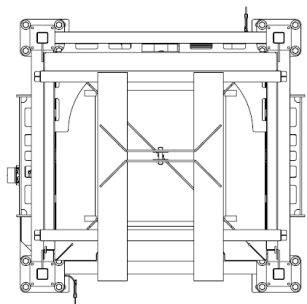
Area Classification: General Purpose

Discharge Rate:

Accuracy: +/- 1.5 lbs

Application Overview:

Customer needed to transfer potassium nitrate by weight to a downstream mix tank. Due to the agglomerated nature when its discharged out of the bulk bag, a heavy duty Crumbler was required to break the material down to its original Prill state so it could be pneumatically transferred. The NBE scale package and Crumbler were tied to the customers transfer system for a controlled weight transfer to the mix tank.



REVISIONS		NAME	DATE
LET	REVISION NOTES	BTK	11/19/20
A	ISSUED FOR CUSTOMER APPROVAL	BTK	12/2/2020
B	HYDRAULIC RAMS REMOVED	BTK	12/16/2020
C	NBE TERMINAL BOX MOVED TO LEFT SIDE	BTK	1/18/2021
D	AIR INLET NOW 3/4" NPT, 20 CFM FLOW	BTK	3/16/2021
E	AS BUILT	BTK	

Customer PO: P338049
 CSO: E102010210
 Job No: J38926

Exterior Color: Carbon Steel Painted RAL-9003

Material: Potassium Nitrate Prills (Salt)

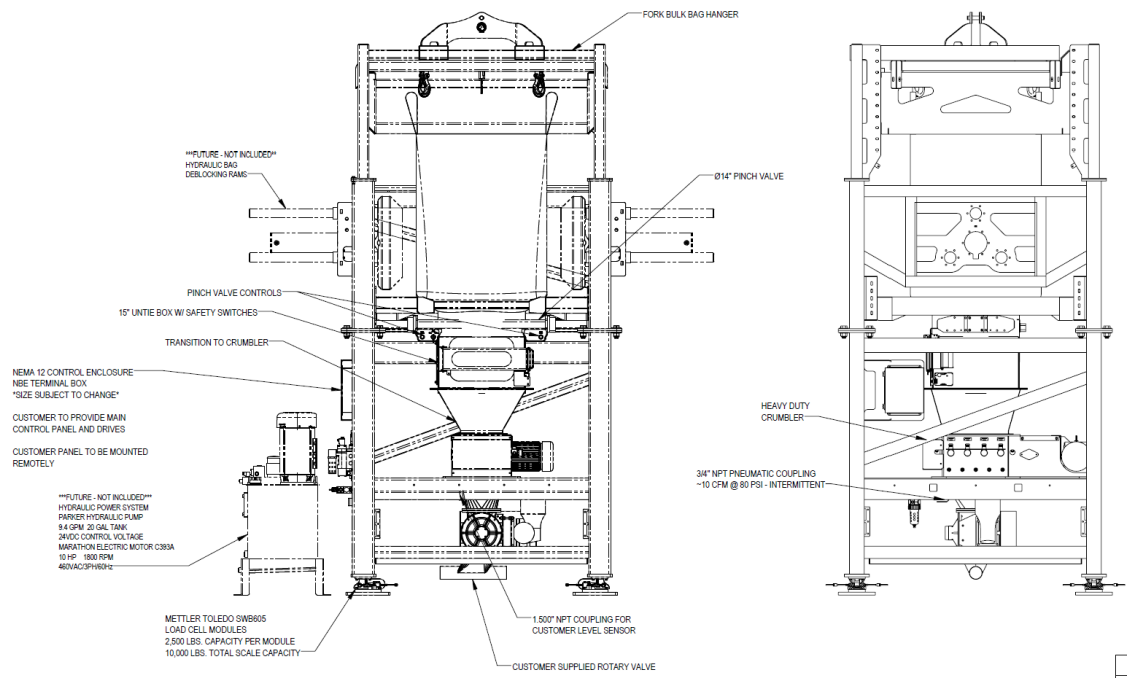
BULK BAG
 Bulk Bag Dimensions: 90cm x 90cm x 112cm Tall
 Straps: 25cm long
 Discharge Spout: Ø60cm x 55cm Long
 Spout Tie Location: N/A
 Weight: 2,650 lbs

DESIGN SPECIFICATIONS

- Product Contact Surfaces: 316L Stainless Steel
- Product Contact Weld Finish: Continuous / Ground smooth, not necessarily flush / Passivated
- Non-product Contact Surfaces: Carbon steel painted RAL-9003
- Non-product Contact Weld Finish: Intermittent (continuous where required for strength) / and ground to remove irregularities.
- Purchased parts are provided with standard construction finish/paint.

CONTROLS

Electrical Supply: 460 VAC / 3 PH / 60 Hz.
 Control Voltage: 24 VDC
 Enclosures: NEMA 12 control enclosures painted RAL 9003
 Area Classification: General Industrial - Non Hazardous
 Plant Air: 10 CFM @ 80 PSI - Intermittent



APPROVED: PROCEED AS DRAWN	THIS DOCUMENT CONTAINS PROPRIETARY INFORMATION AND IS THE PROPERTY OF NATIONAL BULK EQUIPMENT, INC. THIS INFORMATION HAS BEEN OBTAINED TO BE CONFIDENTIAL AND SHALL NOT BE REPRODUCED, COPIED, OR USED IN WHOLE OR IN PART FOR THE MANUFACTURE OR SALE OF ANY PART OR PRODUCT BY YOU OR ANY OTHER PARTY TO WHOM THE INFORMATION MAY BE SUPPLIED WITHOUT THE PRIOR WRITTEN CONSENT OF NATIONAL BULK EQUIPMENT, INC.
APPROVED WITH REVISIONS NOTED	MODEL CREATOR: BTK 12/14/20 DWG BY: BTK DATE: 11/12/2020
NOT APPROVED: REVISE AND RESUBMIT	National Bulk Equipment 12338 STAINLESS DR., HOLLAND, MICHIGAN 49424 PHONE: (616) 399-2220 www.nbe-inc.com
APPROVED BY: _____	ASSEMBLY FORK LIFT BBU SCALE: 1:15 SHEET: 2 OF 8 DRAWING NUMBER: A311155 REV: E

