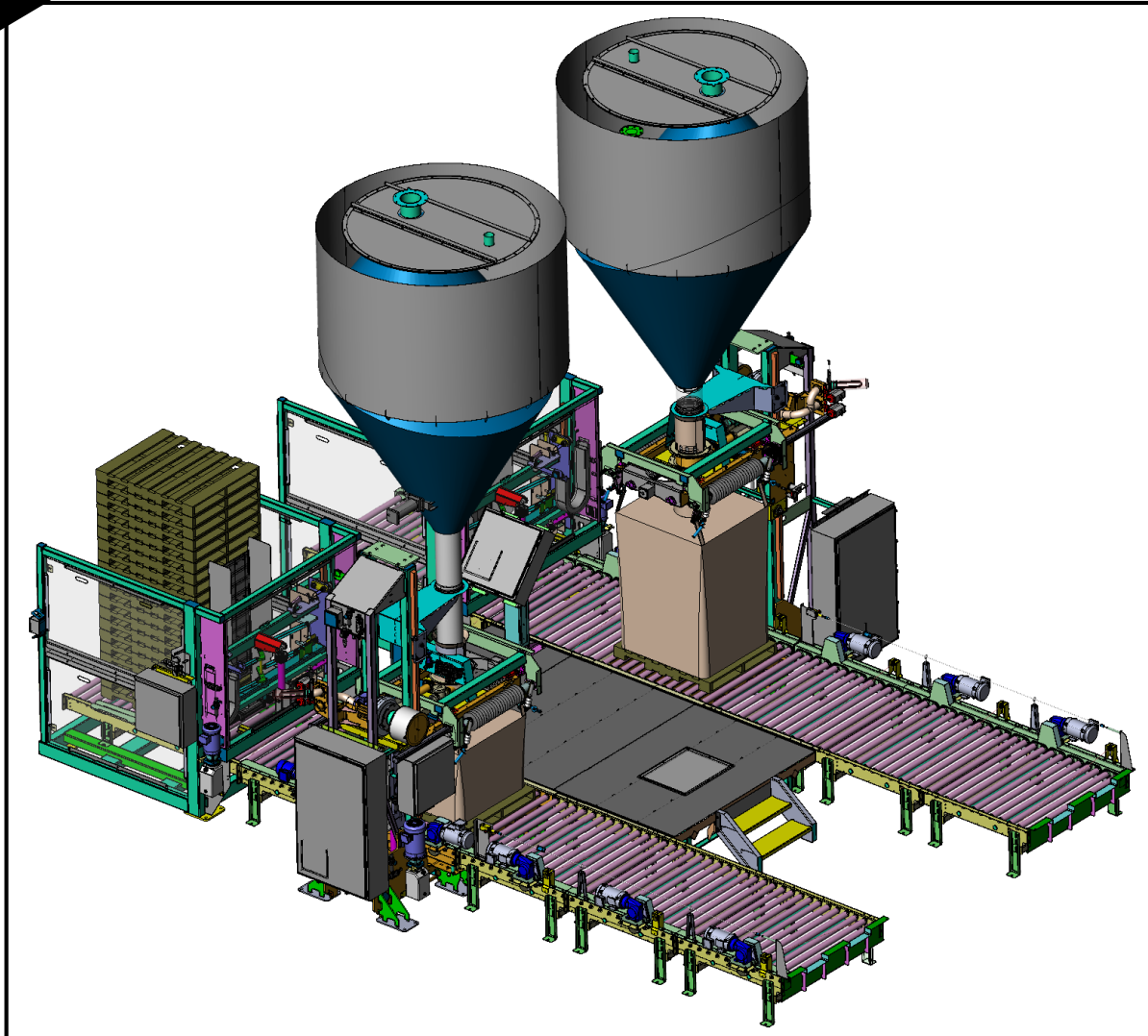


## High Speed Dual Bulk Bag Filling System



### Application Details:

NBE CSO: E342034014

Material: Corn Starch

Bulk Density: 40-42 lbs/ft<sup>3</sup>

Particle Size: 35 Micron

Flowability: Semi-Free Flowing

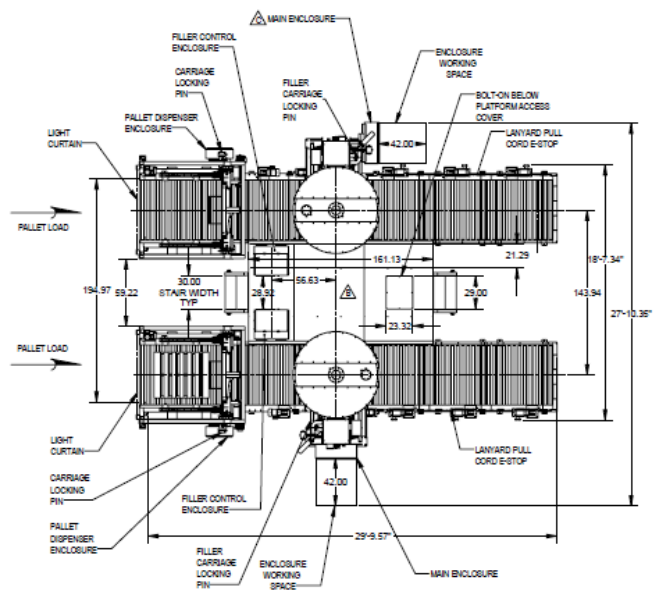
Area Classification: Class II Division 2

System Rate: 25 Bags/Hour

Clean Procedure: Dry Wipe

### Application Overview:

Dual bulk bag filling system in which the customer needed a high speed, reliable, accurate, bulk bag filling system for food grade starch. This system was designed as a complete filling line consisting of pallet dispensers, bulk bag filling equipment, and powered accumulation conveyors. In addition, surge bins were provided above the filling systems for starch storage and process flow. Complete electrical control integration was included within the scope of the project.



PURCHASE ORDER NO: 440043300  
 NBE 000-R-ES0304014  
 JOB:  
 J37187 2N BAG FILLER  
 J37188 2N PALLET DISPENSER  
 J37189 2N STORAGE BIN  
 J37180 CONVEYOR  
 J37182 PLATFORM

**SPECIFICATIONS**  
 - NO EXPLOSION VENTING OR SUPPRESSION FOR HOPPERS INCLUDED  
 - DRY Wipe CLEANING PROCEDURE

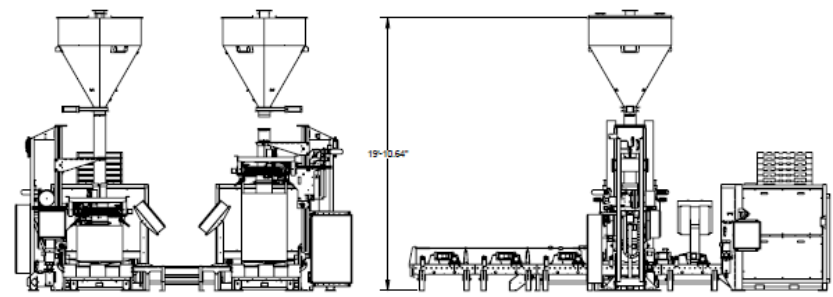
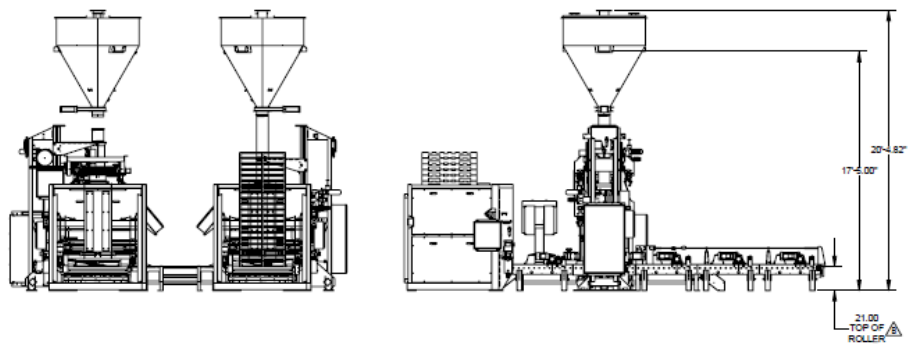
**PALLET:**  
 48" LONG X 40" WIDE X 4.75" TALL 4-WAY GMA

**BULK BAGS:**  
 - BAG HEIGHT 31" - 50", WIDTH & LENGTH 32" - 45", Ø 14" INLET SPOUTS, 8.5"-10" LONG STRAPS

**MATERIALS, WELDING AND FINISH SPECIFICATIONS:**  
 - ALL PRODUCT CONTACT SURFACES ARE CONSTRUCTED FROM 304 STAINLESS STEEL  
 - ALL STAINLESS STEEL MATERIAL 1/8" AND THINNER ARE 2B FINISH  
 - ALL STAINLESS STEEL MATERIAL THICKER THAN 1/8" ARE MILL FINISH  
 - ALL STAINLESS STEEL MATERIALS TUBING AND PIPE ARE MILL FINISH  
 - ALL PRODUCT CONTACT WELDS ARE CONTINUOUS AND GRIND TO REMOVE IRREGULARITIES  
 - ALL NON-PRODUCT CONTACT SURFACES ARE CONSTRUCTED FROM CARBON STEEL AND PAINTED STEEL-IT EPOXY  
 - ALL NON-PRODUCT CONTACT WELDS ARE INTERMITTENT, CONTINUOUS WHERE REQUIRED FOR STRENGTH AND GRIND TO REMOVE IRREGULARITIES  
 - PURCHASED PARTS ARE PROVIDED WITH STANDARD CONSTRUCTION FINISH/PART.

**ELECTRICAL:**  
 - CLASS II DIVISION 2 GROUP D AREA CLASSIFICATION  
 - HOFFMAN NEMA 4X ENCLOSURES  
 - 480V/3PH/60HZ MAIN POWER CONNECTION  
 - 24V DC CONTROL VOLTAGE

REVISIONS		NAME	DATE
A	ISSUED FOR APPROVAL	RES	5/14/2020
B	REVISED PER CUSTOMER COMMENTS, RE-ISSUED FOR APPROVAL	RES	5/28/2020
C	REVISED PER CUSTOMER COMMENTS, RE-ISSUED FOR APPROVAL	RES	6/1/2020
D	ADJUSTED MAIN CONTROLS ENCLOSURE POSITION	RES	6/15/2020
E	AS-RELEASED FOR PRODUCTION	RES	6/30/2020
F	AS-BUILT	RES	9/4/2020



SYSTEM LAYOUT

APPROVED: PROCEED AS DRAWN	THIS DOCUMENT CONTAINS PROPRIETARY INFORMATION AND IS THE PROPERTY OF NATIONAL BULK EQUIPMENT, INC. THE INFORMATION HEREIN IS TO BE USED ONLY FOR THE PROJECT AND SHALL BE RETURNED TO NATIONAL BULK EQUIPMENT, INC. UPON COMPLETION OF THE PROJECT. ANY REPRODUCTION OR DISTRIBUTION OF THIS DOCUMENT WITHOUT THE WRITTEN CONSENT OF NATIONAL BULK EQUIPMENT, INC. IS STRICTLY PROHIBITED.
APPROVED WITH REVISIONS NOTED	
NOT APPROVED: REVISE AND RESUBMIT	
APPROVED BY: _____	National Bulk Equipment 12025 STAINLESS DR., HOLLAND, MICHIGAN 49424 PHONE: (616) 386-2220 www.nbe-inc.com MODEL CREATOR RES 5/1/2020 DWG BY RES DATE 5/13/2020 ASSEMBLY FILLING SYSTEM CS/304SS DATE: 5/13/2020 1:48 2 OF 5 D A297628 F

