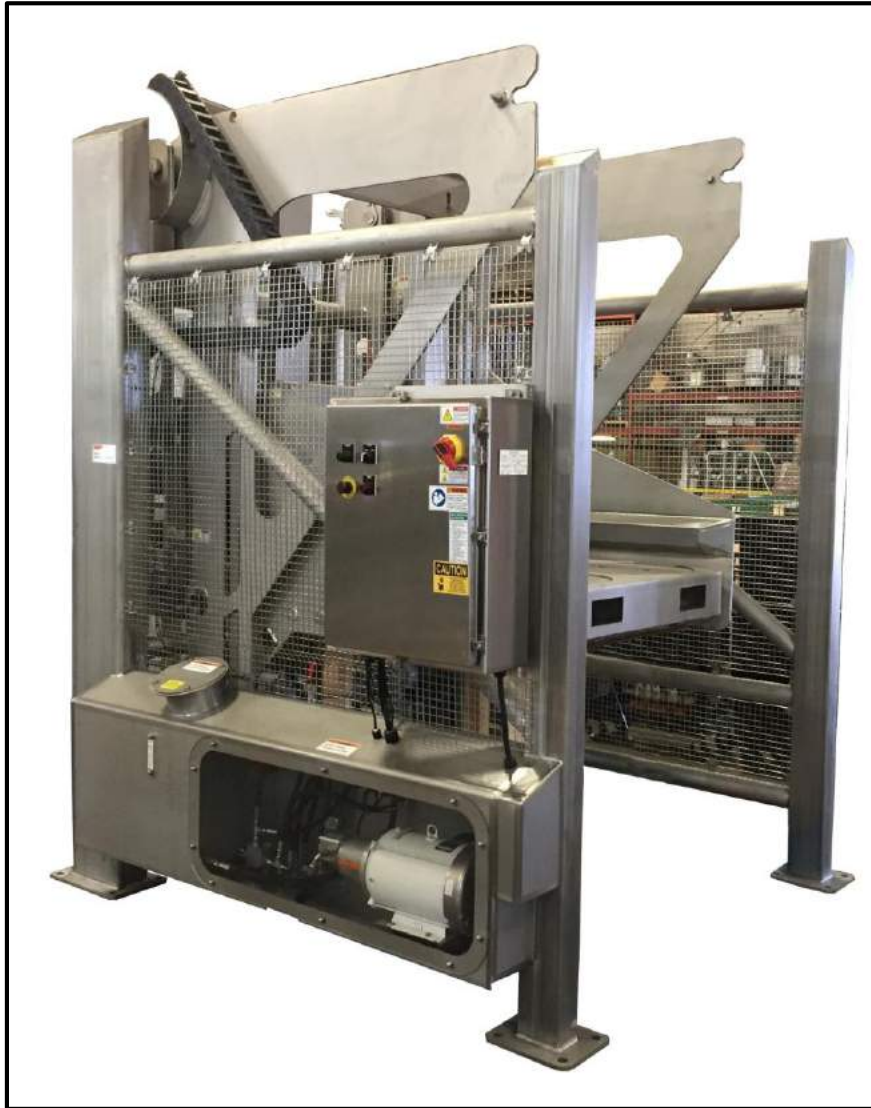


Tomato Paste Lift & Seal Tote & Drum Discharger



Application Details:

NBE CSO: E901590007

Material: Tomato Paste

Bulk Density: 60 lbs/ft³

Particle Size: Paste

Flowability: Sluggish, Non-Free Flowing

Area Classification: General Industrial

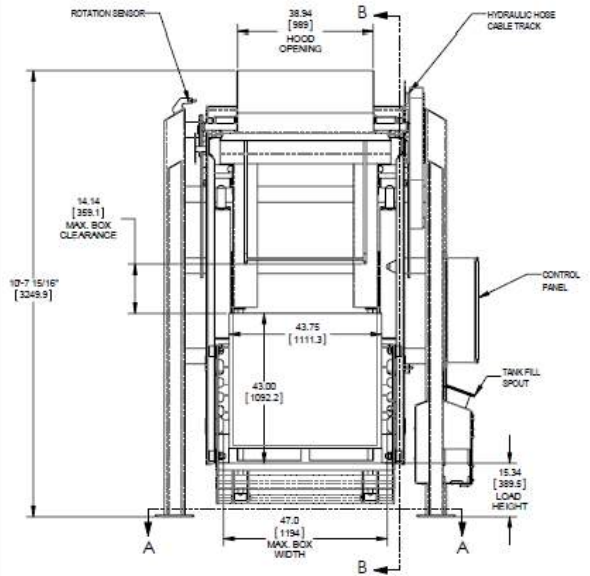
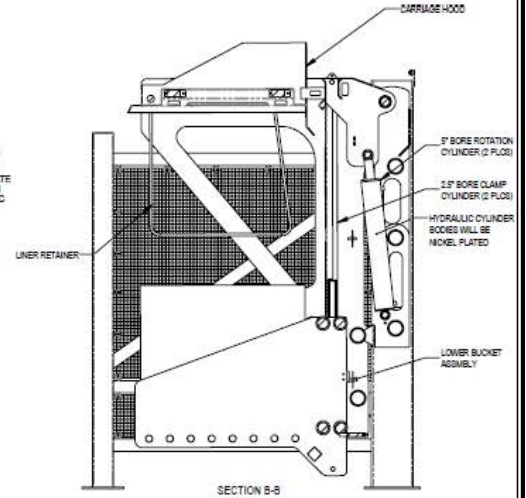
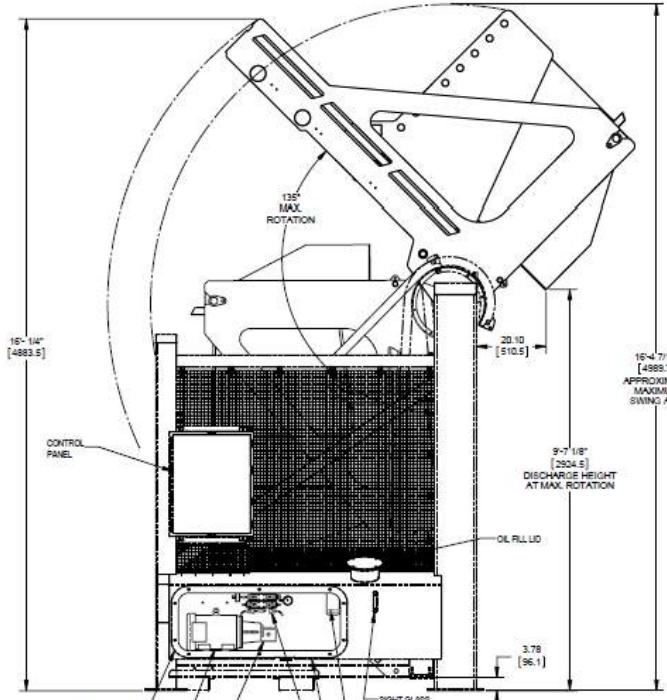
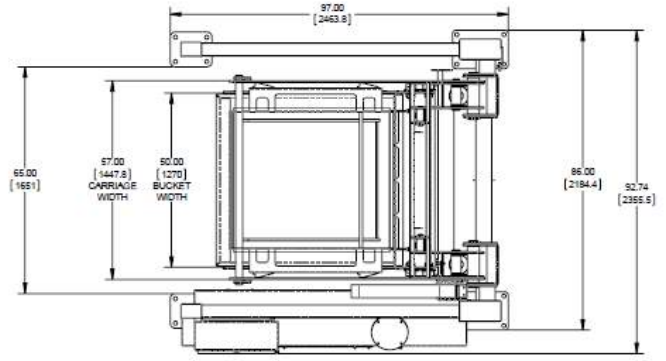
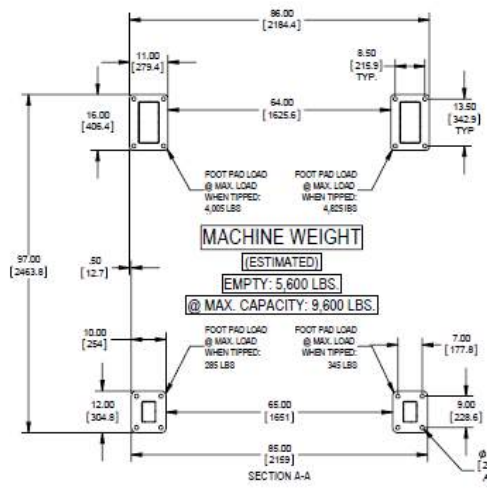
Customer Requested Rate: As fast as possible

Cleaning Procedure: Wet Wash

2015 Project Value: \$320,000.00 Qty (2)

Application Overview:

Customer replaced two (2) existing tomato paste container dischargers with robust sanitary units designed to be washed down. The units utilized integrated hydraulic pumps to help minimize equipment on the floor. The dischargers were engineered to work with an existing platform and tanks. The customer also had specialty tomato paste in fiber drums, so they tasked NBE to design a special fixture to insert into the container discharger to handle four drums at a time.



APPROVED: PROCEED AS DRAWN	THIS EQUIPMENT IS THE PROPERTY OF NATIONAL BULK EQUIPMENT, INC. THIS INFORMATION MAY BE RELEASED TO ANY PARTY OR REPRODUCED BY YOU OR ANY OTHER PARTY TO WHOM THE INFORMATION MAY BE SUPPLIED WITHOUT THE PRIOR WRITTEN CONSENT OF NATIONAL BULK EQUIPMENT, INC.
APPROVED WITH REVISIONS NOTED	
NOT APPROVED: REVISE AND RESUBMIT	
APPROVED:	

National Bulk Equipment
1200 STANLEIGH DR., HOLLAND, MICHIGAN 48624
PHONE: (616) 346-2225 www.nbe-inc.com

MODEL CREATOR: MWH (REVISED) DWG BY: MWH DATE: 12/16/2015
ASSEMBLY, LIFT & SEAL TIPPER 304SS
NBE (M) ALL OTHERS (S) SCALE: 1:16 SHEET NO: 1200STANLEIGH001
REV: 1-16 3 OF 8 D A173800 D

Material Information
-Material Name: Tomato Paste
-Bulk Density: 60 lbs./ft³
-Particle Size: Paste
-Flowability: Sluggish, Non-free Flowing

Tote and Drum Information
-Tote Dimensions: Various (See Page 4)
-Drum Dimensions: Various (See Page 5)
-Liner: Yes

Construction and Welding Information
-Product Contact Surfaces: 304-2B Stainless Steel
-Product Weld Finish: Continuous / Passivated / Ground Smooth
-Non-Product Contact: 304-2B Stainless Steel
-Non-Contact Weld Finish: Continuous / Ground Smooth
-All non-product contact surfaces not readily available in stainless steel will be sandblasted (or solvent cleaned), primed and painted with Steel-H Epoxy.
-Hydraulic cylinder bodies will be Nickel plated

Controls Information
-Electrical Supply: 450 VAC / 13 Ø / 60 Hz
-Control Voltage: 24 VDC
-Enclosures: NEMA 4X

