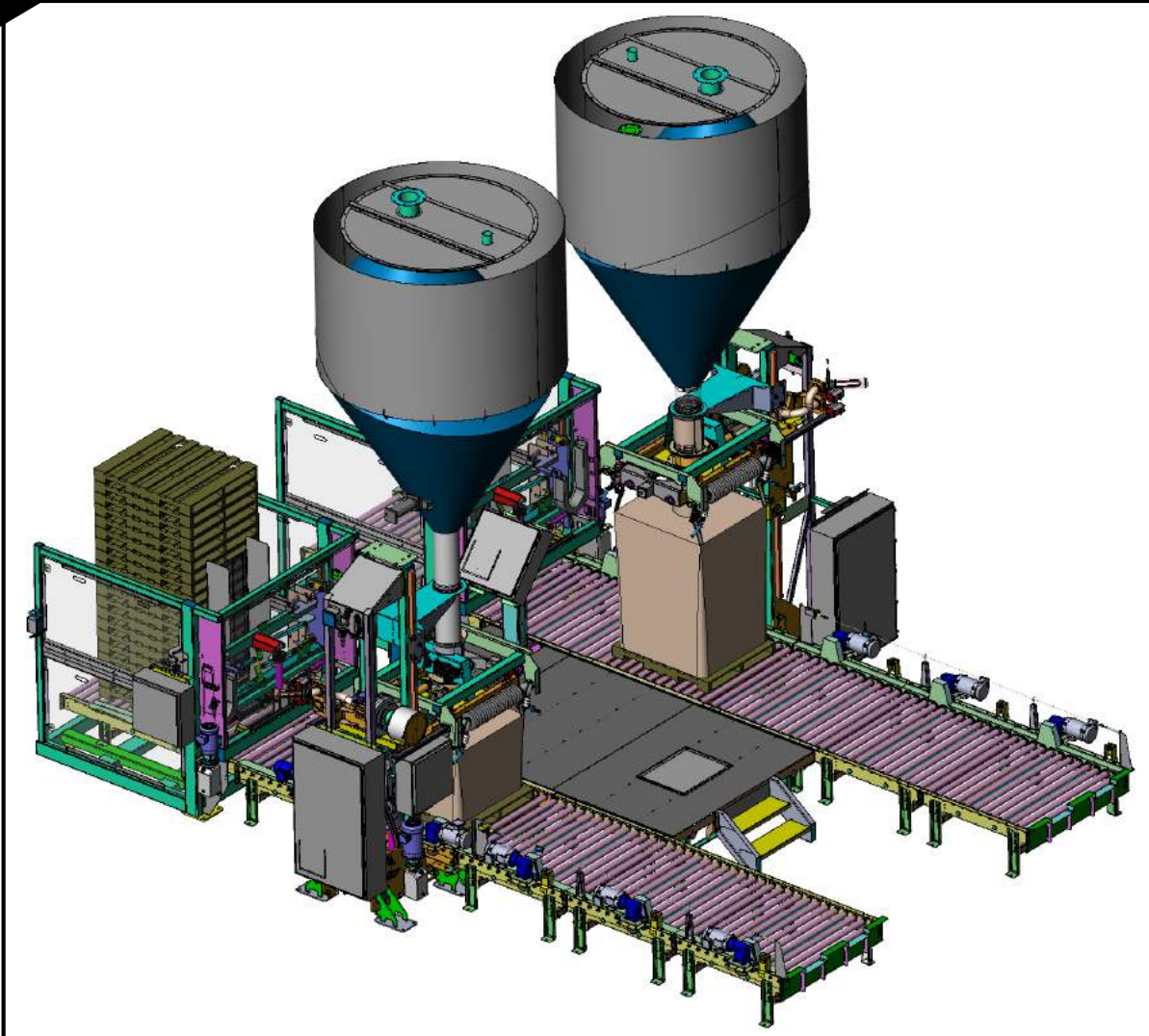


High Speed Dual Bulk Bag Filling System



Application Details:

NBE CSO: E342034014

Material: Corn Starch

Bulk Density: 40-42 lbs/ft³

Particle Size: 35 Micron

Flowability: Semi-Free Flowing

Area Classification: Class II Division 2

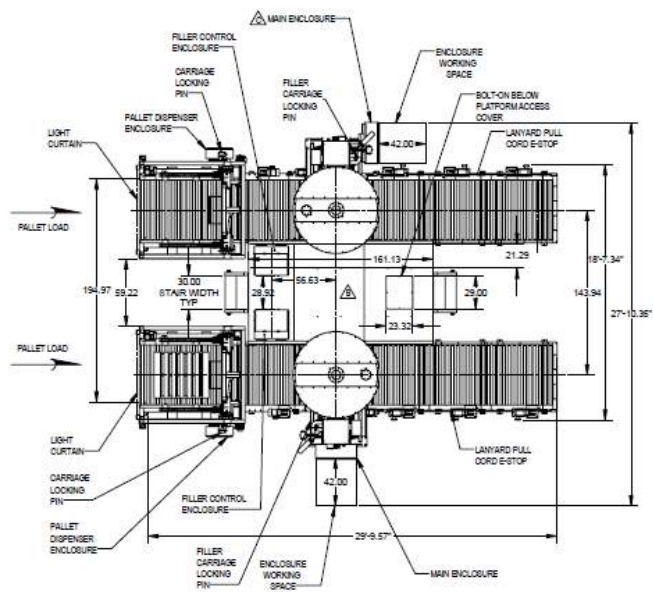
System Rate: 25 Bags/Hour

Clean Procedure: Dry Wipe

2020 Project Value: \$481,270.00

Application Overview:

Dual bulk bag filling system in which the customer needed a high speed, reliable, accurate, bulk bag filling system for food grade starch. This system was designed as a complete filling line consisting of pallet dispensers, bulk bag filling equipment, and powered accumulation conveyors. In addition, surge bins were provided above the filling systems for starch storage and process flow. Complete electrical control integration was included within the scope of the project.



PURCHASE ORDER NO: 440043350
 NBE 000-R-ES0304014
 JOB:
 J37187 2X BAG FILLER
 J37188 2X PALLET DISPENSER
 J37189 2X STORAGE BIN
 J37180 CONVEYOR
 J37112 PLATFORM

SPECIFICATIONS
 - NO EXPLOSION VENTING OR SUPPRESSION FOR HOPPERS INCLUDED
 - DRY Wipe CLEANING PROCEDURE

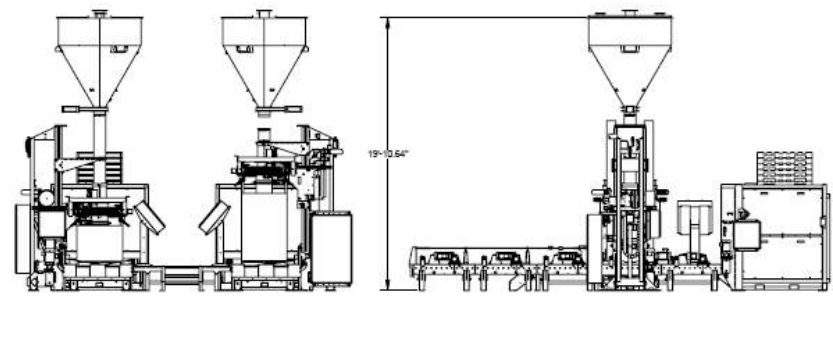
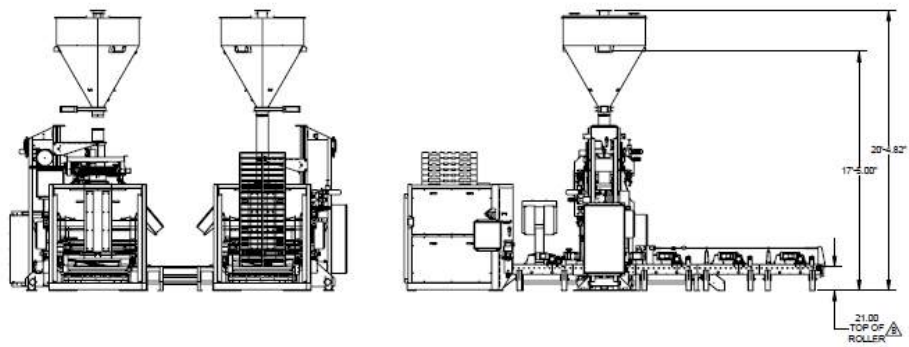
PALLET:
 48" LONG X 40" WIDE X 4.75" TALL 4-WAY GMA

BULK BINS:
 - BAG HEIGHT 31" - 50" WIDTH & LENGTH 32" - 48", Ø 14" INLET SPOUTS, 8.5'-10" LONG STRAPS

MATERIALS, WELDING AND FINISH SPECIFICATIONS
 - ALL PRODUCT CONTACT SURFACES ARE CONSTRUCTED FROM 304 STAINLESS STEEL
 - ALL STAINLESS STEEL MATERIAL 1/4" AND THINNER ARE 2B FINISH
 - ALL STAINLESS STEEL MATERIAL THICKER THAN 1/4" ARE MILL FINISH
 - ALL STAINLESS STEEL MATERIALS TUBING AND PIPE ARE MILL FINISH
 - ALL PRODUCT CONTACT WELDS ARE CONTINUOUS AND GRIND TO REMOVE IRREGULARITIES
 - ALL NON-PRODUCT CONTACT SURFACES ARE CONSTRUCTED FROM CARBON STEEL AND PAINTED STEEL-IT EPOXY
 - ALL NON-PRODUCT CONTACT WELDS ARE INTERMITTENT, CONTINUOUS WHERE REQUIRED FOR STRENGTH AND GRIND TO REMOVE IRREGULARITIES
 - PURCHASED PARTS ARE PROVIDED WITH STANDARD CONSTRUCTION FINISH PAINT.

ELECTRICAL:
 - CLASS II DIVISION 2 GROUP D AREA CLASSIFICATION
 - HOFFMAN NEMA 4X ENCLOSURES
 - 400V/3PH/60HZ MAIN POWER CONNECTION
 - 24V DC CONTROL VOLTAGE

REVISIONS		NAME	DATE
A	ISSUED FOR APPROVAL	RES	5/14/2020
B	REVISED PER CUSTOMER COMMENTS, RE-ISSUED FOR APPROVAL	RES	5/28/2020
C	REVISED PER CUSTOMER COMMENTS, RE-ISSUED FOR APPROVAL	RES	6/11/2020
D	ADJUSTED MAIN CONTROLS ENCLOSURE POSITION	RES	6/15/2020
E	AS-RELEASED FOR PRODUCTION	RES	6/30/2020
F	AS-BUILT	RES	9/4/2020



SYSTEM LAYOUT

APPROVED: PROCEED AS DRAWN	THIS DOCUMENT IS UNLESS OTHERWISE SPECIFIED THE PROPERTY OF NATIONAL BULK EQUIPMENT, INC. THE INFORMATION HEREON IS FOR YOUR USE ONLY AND IS NOT TO BE REPRODUCED OR TRANSMITTED IN ANY FORM OR BY ANY MEANS, ELECTRONIC OR MECHANICAL, INCLUDING PHOTOCOPYING, RECORDING, OR BY ANY INFORMATION STORAGE AND RETRIEVAL SYSTEM. THE INFORMATION HEREON IS NOT TO BE USED FOR ANY OTHER PROJECT WITHOUT THE WRITTEN PERMISSION OF NATIONAL BULK EQUIPMENT, INC.
APPROVED WITH REVISIONS NOTED	
NOT APPROVED: REVISE AND RESUBMIT	
APPROVED BY: [Signature]	National Bulk Equipment 12000 STAINLESS DR., HOLLAND, MICHIGAN 49424 PHONE: (616) 396-2320 www.nbe-inc.com MODEL CREATOR RES 5/12/20 1:48M BY RES DATE 5/13/2020 ASSEMBLY FILLING SYSTEM CS/304SS DATE: 5/13/2020 1:48M 2 OF 5 D A297628 F

