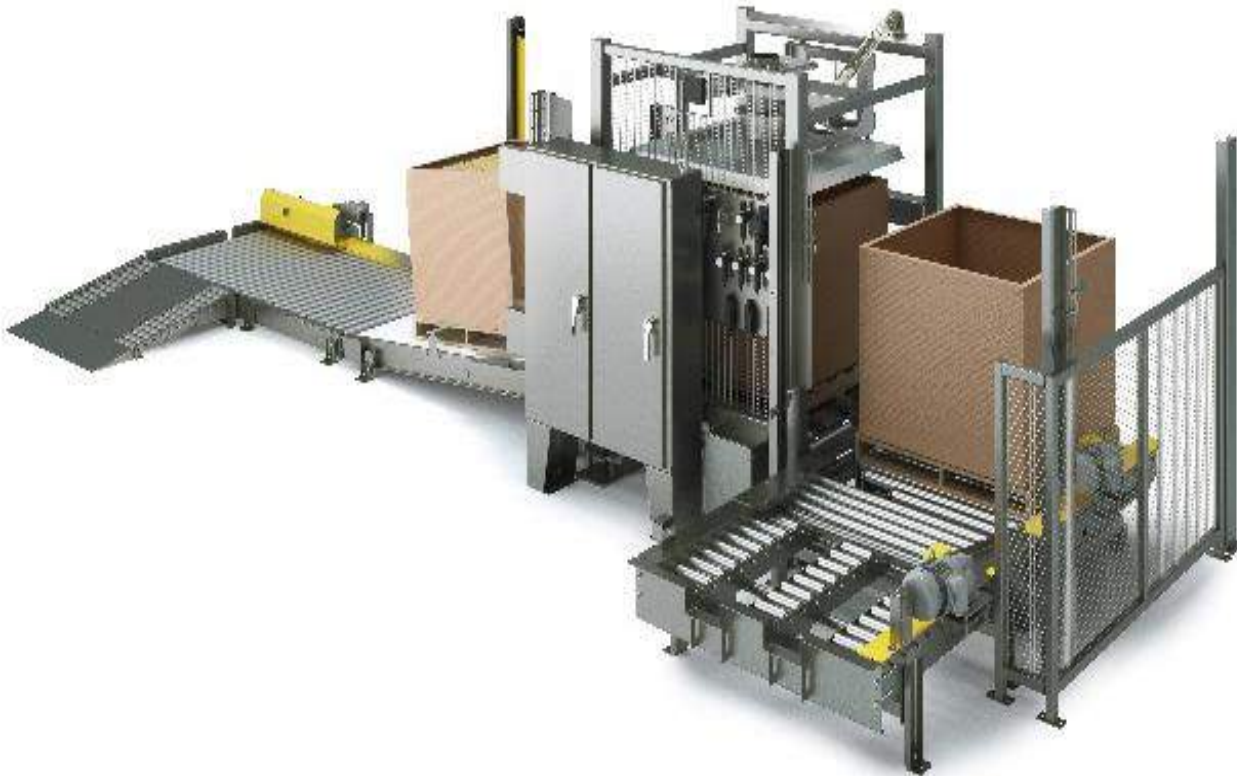


Gaylord Fill Station w/ Infeed & Accumulation Conveyors



Application Details:

NBE CSO: E601660054

Material: Various Cereal

Bulk Density: 7.21 to 9.56 Lbs/ft³

Particle Size: Various Shapes

Flowability: Free-Flowing

Area Classification: General Industrial

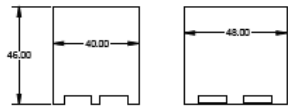
Customer Requested Rate: 20 Totes/hour

Clean Procedure: Dry Wipe

2016 Project Value: \$133,526

Application Overview:

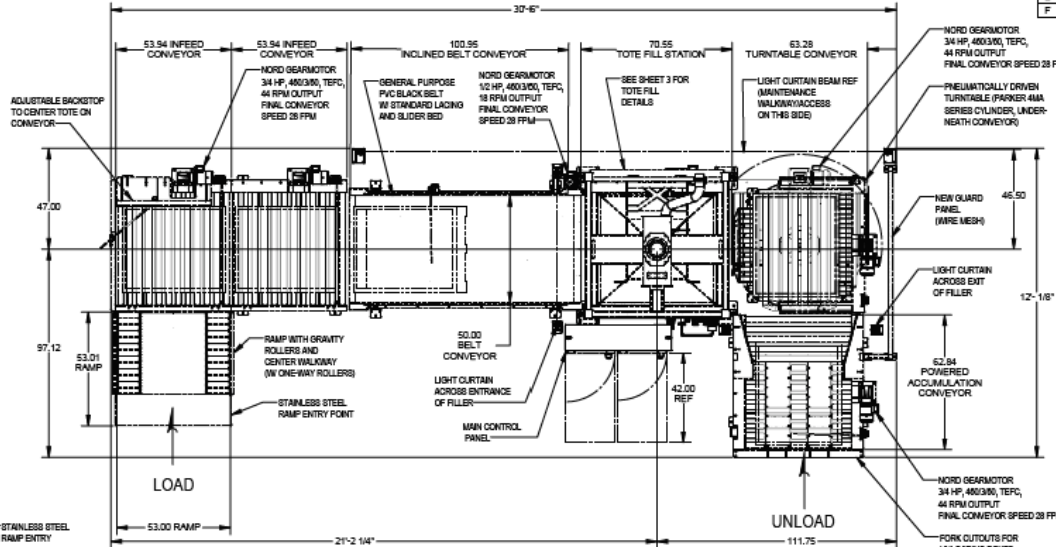
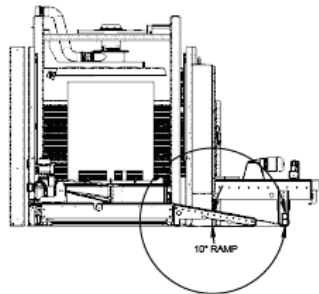
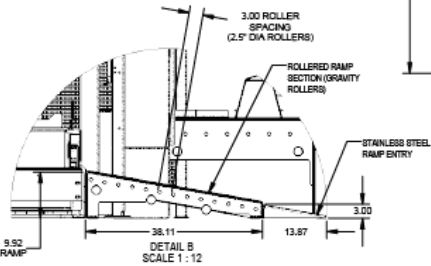
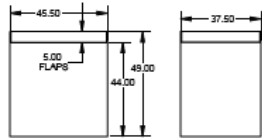
The Gaylord Fill Station was located in an area with a very low ceiling height. NBE designed around existing equipment with a fixed infeed tube. Light curtains and safety caging were integrated to eliminate operators from entering the processing area. The project included a Risk Assessment and Category 3 safety circuit control package.



PLASTIC TOTE DIMENSIONS SHOWN

CORRUGATED TOTE IS SIMILAR STYLE WITH OVERALL DIMENSIONS 46L" X 38D" X 45H"

CARDBOARD BOXES ON SLIP SHEETS:



LET	REVISION NOTES	REVISIONS	NAME	DATE
A	SUBMITTED FOR APPROVAL		TJB	11/17/2016
B	SHORTENED FILLER, UNLOAD CONV, POWERED, MISC UPDATES		TJB	1/10/2017
C	REVISED PER CUSTOMER COMMENTS		TJB	1/26/2017
D	AS RELEASED		TJB	3/27/2017
E	AS SHIPPED		TJB	3/31/2017
F	AS-BUILT & ACC'D LIGHT CURTAINS		TJB	5/1/2017

CUSTOMER PO#: 4101536265
NBE CSO#: E601660054

Application info:

- Material: Cereal
- Filler Capacity: 4000 lbs
- Rate: 20 toles per hour
- Tote #1: 40" x 48" x 46"
- Tote #2: 38" x 46" x 45"
- Other containers: cardboard boxes on slip sheets
- Designed and built for use in general industrial (non-hazardous) area

Construction:

- 304 stainless steel product contact, welded continuous and welds ground smooth
- Carbon steel non-product contact, stitch welded except where needed for strength, welds ground to remove irregularities
- Paint: Steel-It epoxy

Controls:

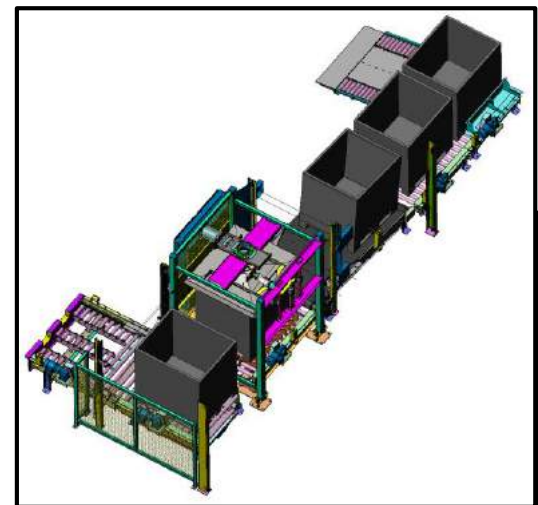
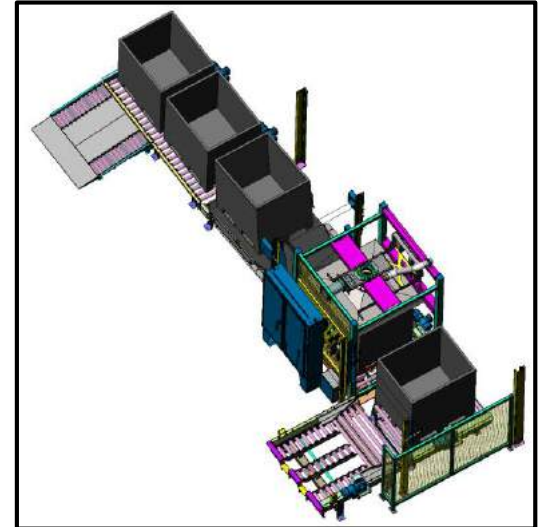
- 460/360 power voltage, 24VDC control voltage
- NEMA type 12 enclosures
- Category 3 safety

Utilities:

- Compressed air: Approx. 10 CFM @ 80 PSI required
- Dust collection: Approx. 450 CFM @ 5" w.c. required (Note: 450 CFM will provide a face velocity at hood/face interface of approximately 150 FPM)

Equipment shipping/installation weights (approximate):

- Tote filler: 3000 lbs
- Turntable conveyor: 1600 lbs
- Powered accumulation conveyor: 875 lbs
- Incline belt conveyor: 925 lbs
- Infeed roller conveyor: 600 lbs (x2)
- Ramp: 290 lbs



GENERAL ARRANGEMENT

APPROVED: PROCEED AS DRAWN	THIS DOCUMENT CONTAINS PROPRIETARY INFORMATION AND IS THE PROPERTY OF NATIONAL BULK EQUIPMENT, INC. THE USER'S OBLIGATION IS TO RETURN THIS DOCUMENT TO THE COMPANY OR TO DESTROY IT IF IT IS NOT TO BE USED. THE COMPANY WILL NOT BE RESPONSIBLE FOR THE REPRODUCTION OR DISSEMINATION OF THIS DOCUMENT WITHOUT THE WRITTEN CONSENT OF NATIONAL BULK EQUIPMENT, INC.	MODEL CREATOR: TJB 10/26/16	DWG BY: TJB	DATE: 10/26/2016
X APPROVED WITH REVISIONS NOTED		National Bulk Equipment	LAYOUT TOTE FILLER ASSEMBLY	
NOT APPROVED: REVISE AND RESUBMIT		12345 STAINLESS DR. HOLLAND, MO 64484		
APPROVED BY: Mohamed Ahmed	DATE: 1/12/2017	PHONE: (816) 388-2225	WWW: nbe-inc.com	HOTEL: NBE ALL TRADES DATE TO SCALE: 1:25 SHEET: 2 OF 4 Dwg No: A183987

